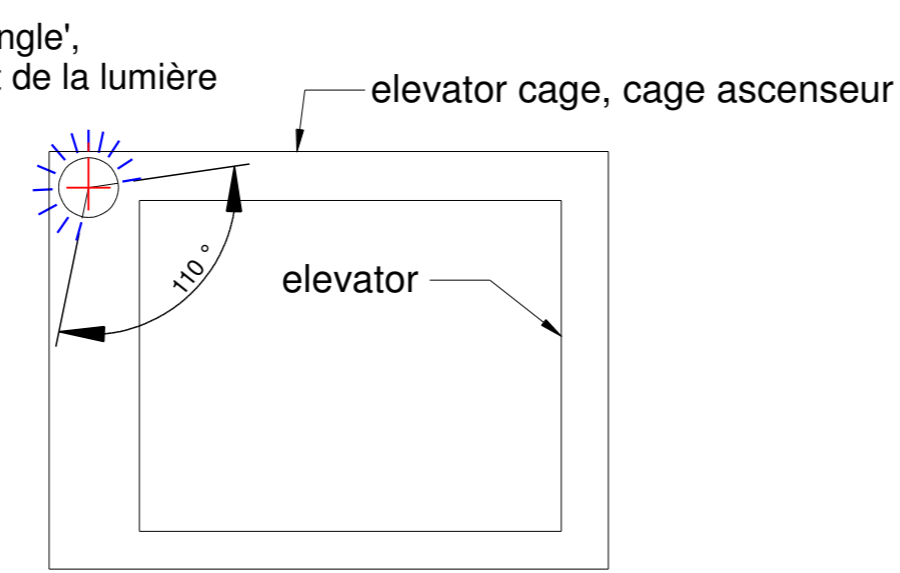
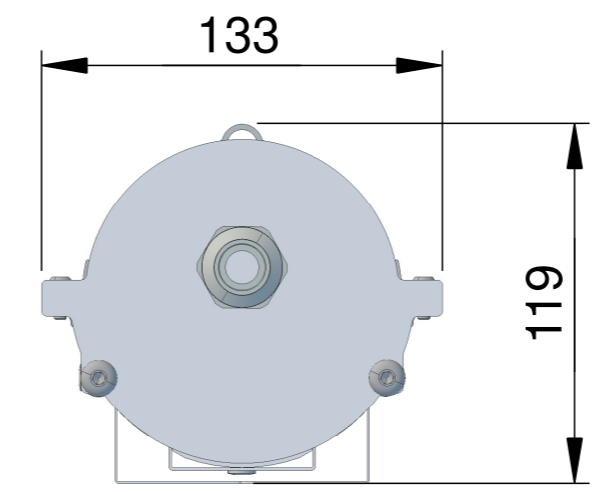


Section A-A 1:2,5

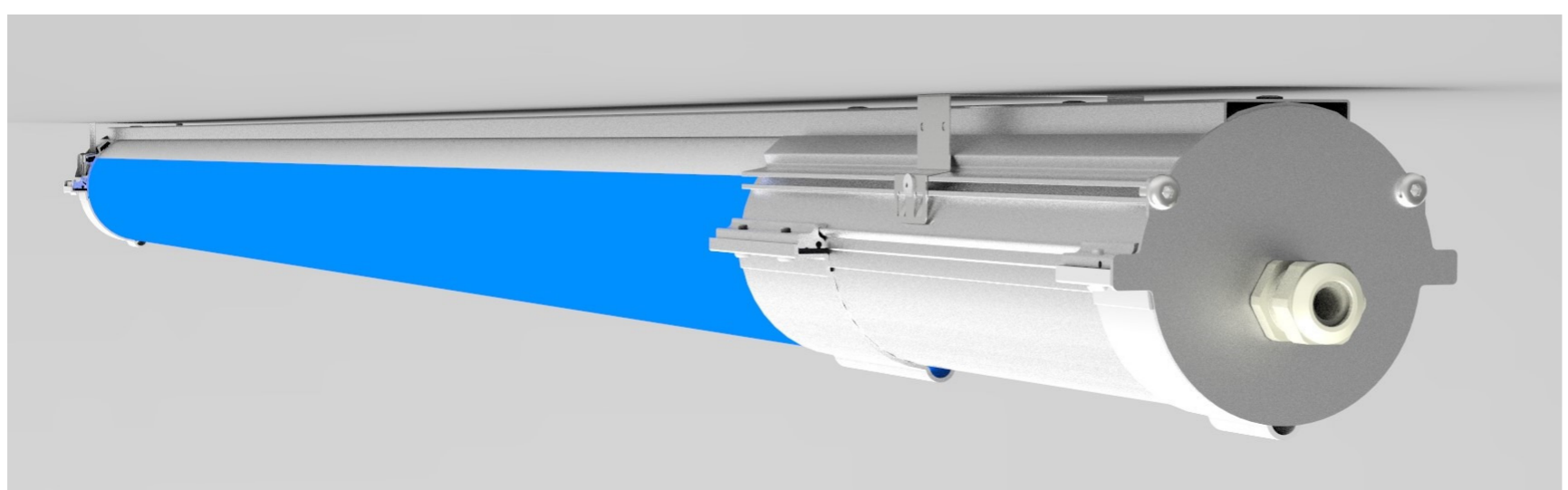
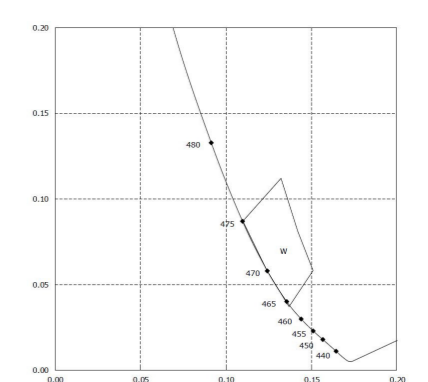


application without luminous flux
inside the elevator
application sans flux lumineux
dans l'intérieur d'ascenseur



Led+
Led-
maximum length 16 meters
longueur maximale 16 mètre

total power, puissance totale: 42 Watt
control, contrôles: DALI
LED type, type de led: NICHIA NCSB219BT-V1
LED current, courant LED: 350mA
munber of leds, nombre de leds: 36 leds
flux per LED, flux lumineux par led: 40 lm (1440 lm au total)
colorcoördinate, coordonnée chromatique: x=0.133 y=0,070



BBL confidential. All rights strictly reserved.
Reproduction or issue to third parties is not permitted



general roughness ra in um ISO 1302	form and position tolerances ISO R 1101	CAD GENERATED DRAWING, DO NOT MANUALLY UPDATE	
american projection / dimensions in mm	tolerance linear ± angle: ±°	scale 1:1	
treatment	surface	material	
date	name	description	
drawn 23-11-2015	B.E.	BB LEDLightpipe 2m ou 3m blue	
appr.		drawing number	
releas		5701	
rev.	description	date	name
original			
		rev. R3	size A2
		sheet 1 of 1	